

Pro SupremeTM

Premium quality interior flat wall and ceiling paint formulated for residential and commercial new construction and repaint applications.



- Superior Touch Up
- Outstanding Scrub Rating – Highly Washable
- Higher Solids - Higher Film Build
- Self-priming on drywall
- Excellent for new construction walls and ceilings



P A I N T S

A PPG Brand





ProSupreme™

6710 Series Flat

Product Data

ProSupreme Flat Wall & Ceiling Paint is formulated for residential and commercial projects where superior performance coupled with excellent touch-up are desired.

Ideal for new home construction, *ProSupreme* is formulated with the latest technology in pigments and resins that provide excellent hiding, low spatter, outstanding scrub resistance, enhanced durability and premium touch-up capabilities.

The paint film of *ProSupreme* dries to an extremely flat finish. This helps hide surface imperfections in the drywall and also aids in the excellent touch-up of the product.

ProSupreme Flat Wall and Ceiling Paint provides higher volume solids and overall performance above that of typical builder flat latex paints.

Superior Touch Up

ProSupreme is formulated to provide excellent touch-up, even under the harshest conditions. For optimal results, thin the touch-up material and apply in same manner as the original paint.



Example of excellent touch-up.

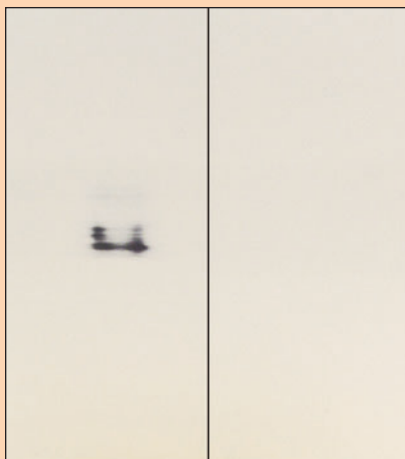


Example of poor touch-up.

Scrub Resistance

ProSupreme still shows no signs of abrasion after 2,000 scrub cycles. The leading competitor failed at 414 cycles.

This method is done in accordance with ASTM D2486. This test accelerates film failure by repeatedly abrading the paint film. Abrasion is accomplished by scrubbing the film with a stiff nylon bristle brush and abrasive medium. The paints were applied side-by-side and scrubbed to failure as noted by either break through over a metal shim used to accelerate the test or until complete failure of one of the comparative samples.



Leading Competitor ProSupreme

Bases

White (tintable) – 6710

Deep – 6718

Sheens

Flat (<1 unit @ 85°)

Drying Time @ 70°F & 50% R.H.

To Touch: 1 hour

To Recoat: 4 hours.

Recommended Coverage

400 - 500 sq. ft. per gallon when applied to smooth surfaces.

Application method and substrate will affect spread rates.

Thinner & Clean-Up

Thinner: Water

Clean-Up: Warm, Soapy Water

Primers

Self-Priming on Drywall.

Application

Nylon brush, roller, or spray



The technical data furnished is true and accurate to the best of our knowledge. However, no guarantee of accuracy is given or implied. We guarantee our products to conform to Porter quality control. We assume no responsibility for coverage, performance or injuries resulting from use. Liability, if any, is limited to replacement of products. Technical data are subject to change without prior notice.